

Release Notes for Amplifire™ version 7.33

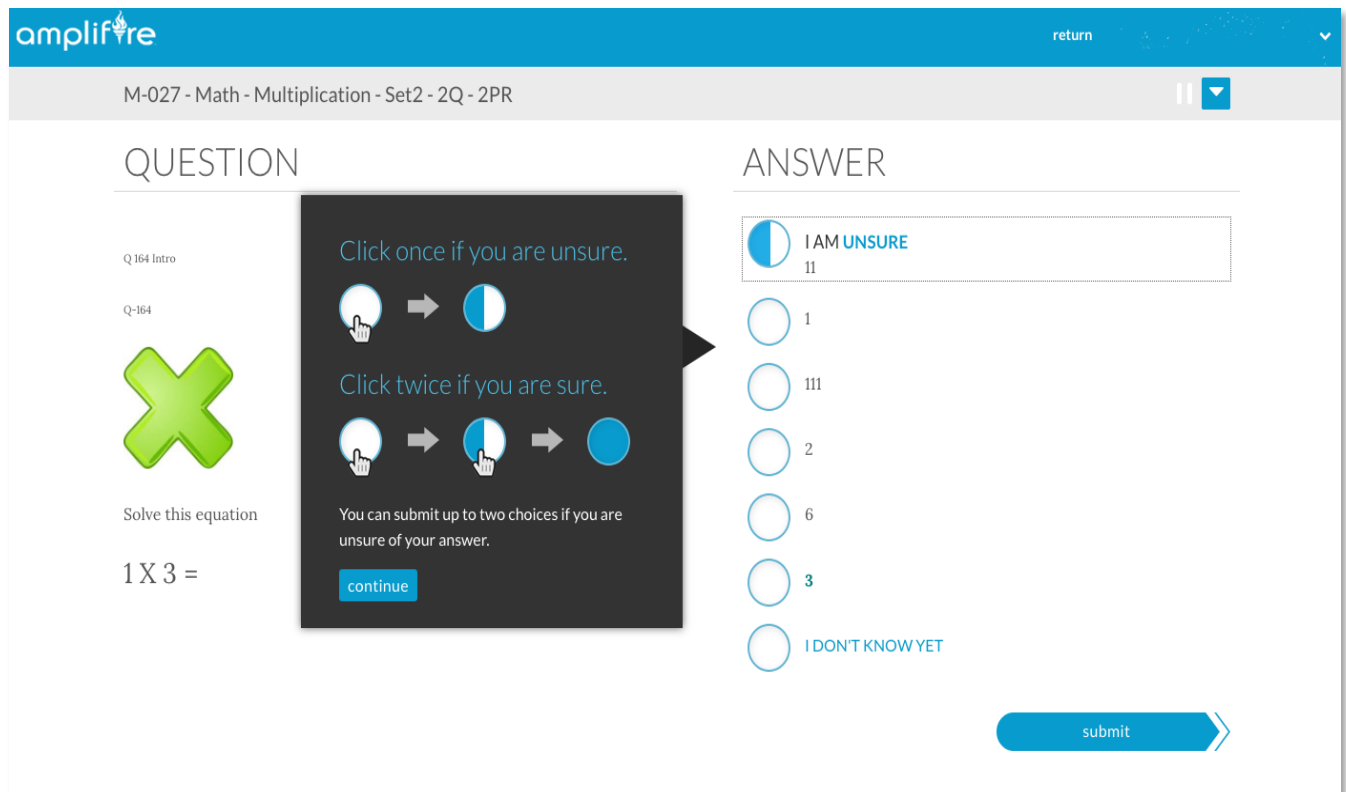
July 18, 2017

This notice is current for Amplifire 7.33 which was deployed to Production on Sunday, July 16, 2017 during a regular maintenance window.

New or Updated Functionality

Learning

Improved Instructional Overlays: The Amplifire usage popup instructions have been redesigned to clarify to learners how to click to answer a question and indicate their confidence in their response as “sure” or “unsure.” Both the text and the images were updated (see screen shots). In addition, Amplifire will now require the learner to click a “continue” button to close the overlays to improve the likelihood that they will be read and understood before the popup is dismissed. Also, the text changes support internationalization and can now be translated into French, German, Italian, Portuguese, and Spanish.



Instructional Overlays: One of our other goals in simplifying the instructions is to guide learners in mastering a question by ensuring they know how to indicate full or partial confidence appropriately. The new overlay will now appear when a learner has answered 'correct but unsure' four times with the message "You knew this!"

The screenshot shows the Amplifire interface. At the top, the logo "amplifire" is on the left and "return" is on the right. Below the logo, the text "M-027 - Math - Multiplication - Set2 - 2Q - 2PR" is displayed. The main content area is split into two columns: "QUESTION" on the left and "ANSWER" on the right. In the "QUESTION" column, there is a large green "X" icon, a "got it" button, and the text "Solve this equation" followed by "1 X 3 =". In the "ANSWER" column, there are several radio button options: "2", "3", "11", "1", "111", "6", and "I DON'T KNOW YET". The "3" option is selected and highlighted in green, with the text "YOU WERE UNSURE AND CORRECT" next to it. A blue "learn" button is located at the bottom right of the interface. An instructional overlay is present in the center, featuring a dark background with the text "You knew this!" and "If you did, tell us by answering I am sure." Below this text is a sequence of three circles: a white circle with a hand cursor, a blue circle with a hand cursor, and a solid blue circle, connected by arrows. A "got it" button is also visible within the overlay.

System

LTI integration: We continue to refine and improve the behavior of the LTI integration protocol with learning management systems to allow it to pass more information about users, courses and learner progress, allowing instructors to pull more useful reports.

Accessibility: When a learner first accesses Amplifire, instructional overlays (mentioned above) are presented that explain how to use the software. The new overlays are JAWS compatible. We also fixed another minor issue to be sure that Amplifire continues to follow accessibility guidelines and standards. (JAWS reads software content aloud to help computer users with vision loss to use computer systems effectively and navigate with a mouse.)

Authoring

We continue to develop our new Authoring tool, which will eventually be available as a new tab in the Amplifire interface. Small but important increments are being built and tested with each

new release. A feature flag will eventually allow access to the tool when it is stable and allows significant functionality. Contact your Customer Service Director for more information.

Browser & OS Support

There were no changes to supported browsers for this release. This is the current matrix.

Note: Only Internet Explorer 11 will allow installation of the Authoring tool.

Operating System	Browser	Version
Windows (all)	Firefox	52
	Chrome	56, 57
	Internet Explorer	11
	Edge	13, 14
Mac OS X (all)	Firefox	52
	Chrome	56, 57
	Safari	9.1, 10
iOS 9.1, 10 (iPad)	Mobile Safari	10
Android 4 - Current <i>Native Android browsers are unsupported.</i>	Firefox	52
	Chrome	57